

# Layer 1 Availability

# Phase 1

	Total	Unscheduled
DENV <-> KANS	99.90405%	100.00000%
CLEV <-> PITT	99.96593%	100.00000%
BOIS <-> OGDE	99.97050%	100.00000%
DENV <-> OGDE	99.98320%	100.00000%
PITT <-> WASH	99.98821%	100.00000%
PORT <-> SUNN	99.93597%	99.99639%
ATLA <-> RALE	99.94591%	99.99533%
SEAT <-> PORT	99.97745%	99.99414%
CHIC <-> KANS	99.93952%	99.98096%
SUNN <-> LOSA	99.83624%	99.92492%
SEAT <-> BOIS	99.54600%	99.62216%
CHIC <-> CLEV	99.33657%	99.53616%
RALE <-> WASH	98.69925%	98.89957%
ATLA <-> JACK	98.56746%	98.72123%

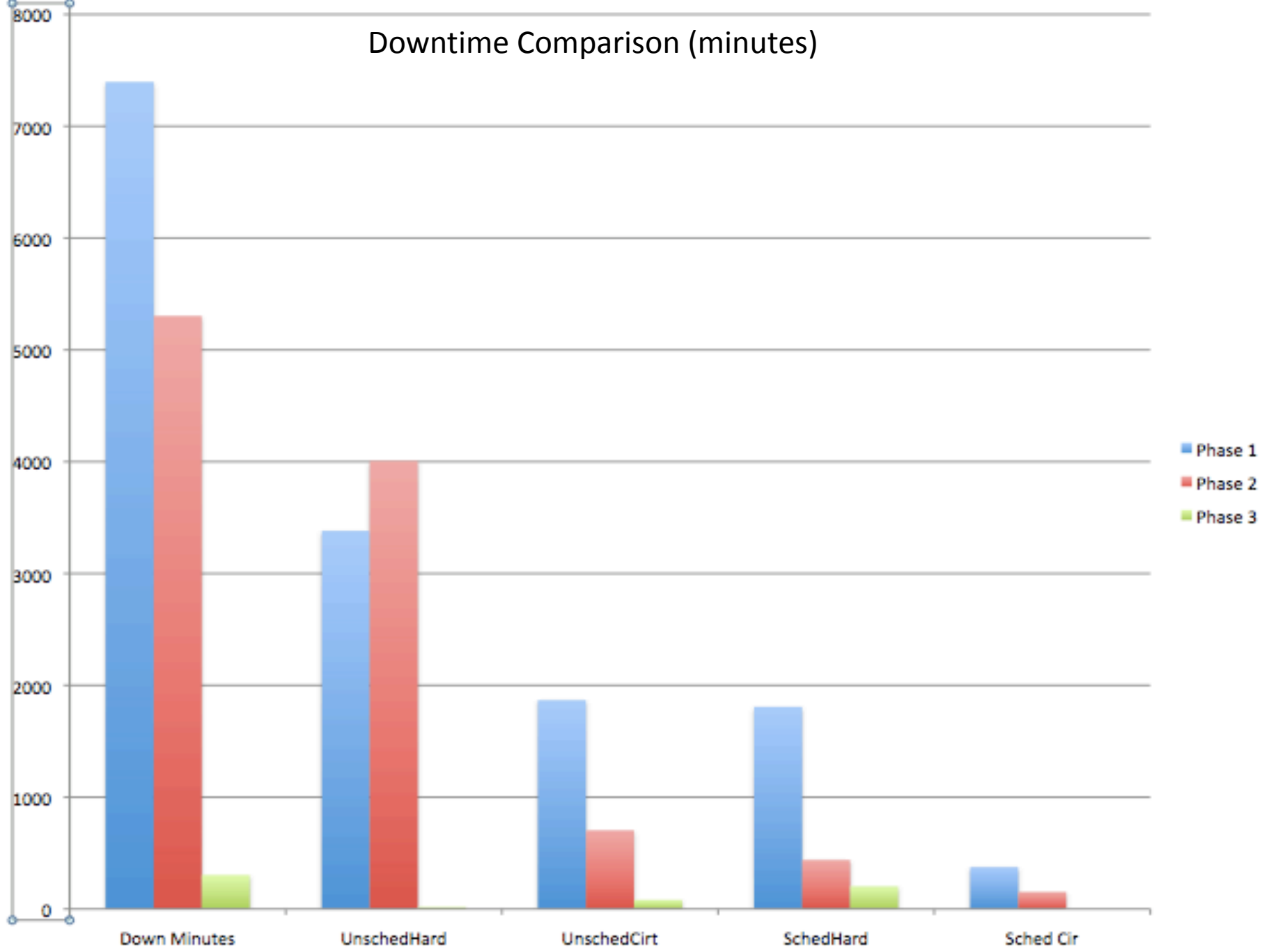
# Phase 2

	Total	Unscheduled
ALBU <-> ELPA	100.00000%	100.00000%
ALBU <-> RATO	100.00000%	100.00000%
BATO <-> HOUS	100.00000%	100.00000%
DALL <-> HOUS	100.00000%	100.00000%
DENV <-> RATO	100.00000%	100.00000%
OGDE <-> SALT	100.00000%	100.00000%
SANA <-> ELPA	100.00000%	100.00000%
PHOE <-> LOSA	99.99440%	100.00000%
KANS <-> TULS	99.95594%	100.00000%
NEWY <-> WASH	99.98880%	99.99963%
TULS <-> DALL	99.98768%	99.99963%
CHIC <-> STAR	99.99888%	99.99888%
BATO <-> PENS	99.97760%	99.97760%
HOUS <-> SANA	99.88762%	99.89322%
ELPA <-> PHOE	99.84618%	99.84618%
JACK <-> PENS	99.74201%	99.74201%
SYRA <-> NEWY	99.47282%	99.50941%
CLEV <-> SYRA	99.16779%	99.27419%

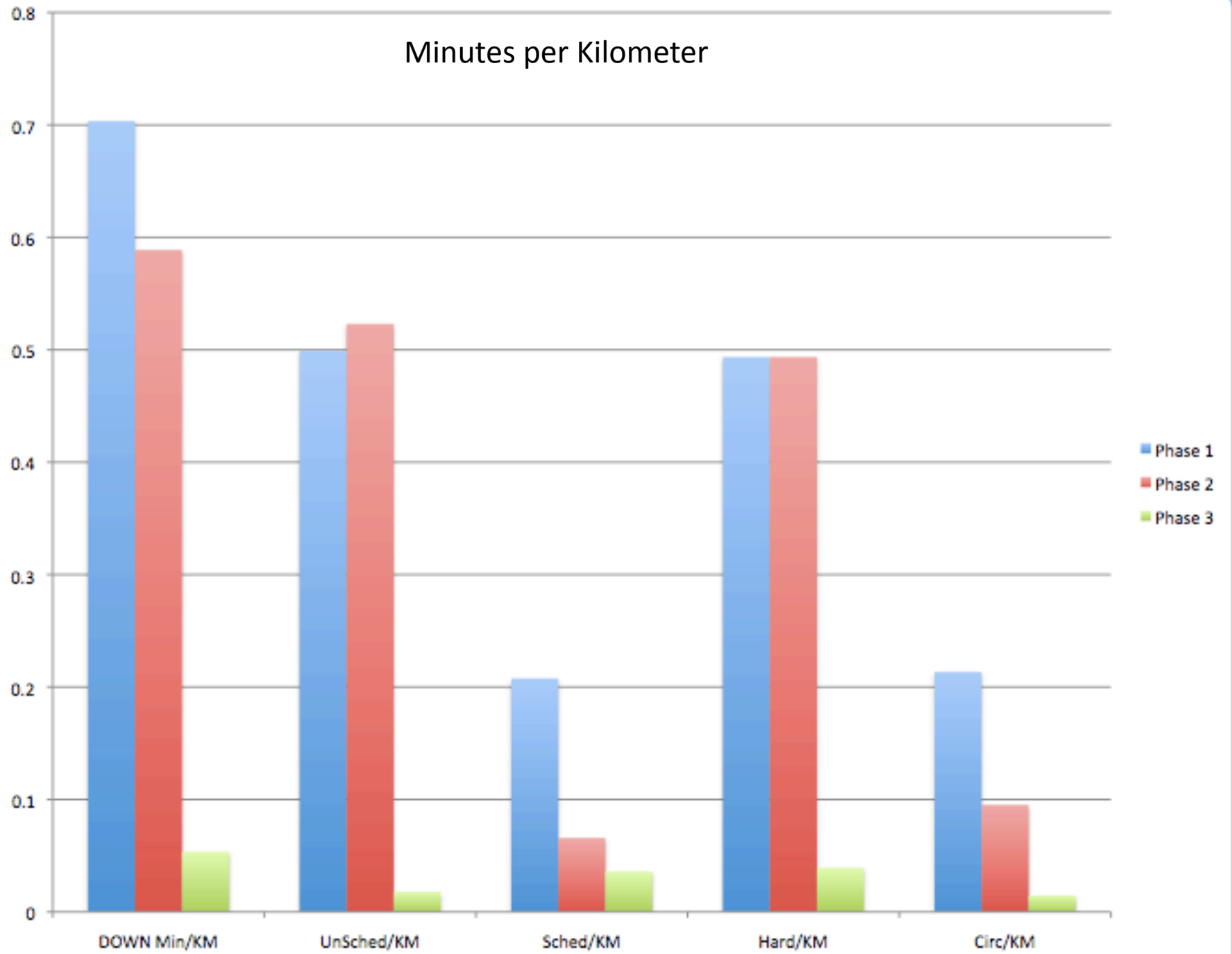
# Phase 3

	Total	Unscheduled
ATLA <-> JACK	100.00000%	100.00000%
ATLA <-> RALE	100.00000%	100.00000%
CHIC <-> CLEV	100.00000%	100.00000%
CLEV <-> PITT	100.00000%	100.00000%
PITT <-> WASH	100.00000%	100.00000%
RALE <-> WASH	100.00000%	100.00000%
SUNN <-> LOSA	99.72953%	100.00000%
SEAT <-> PORT	99.83724%	99.95877%
PORT <-> SUNN	99.82205%	99.82205%

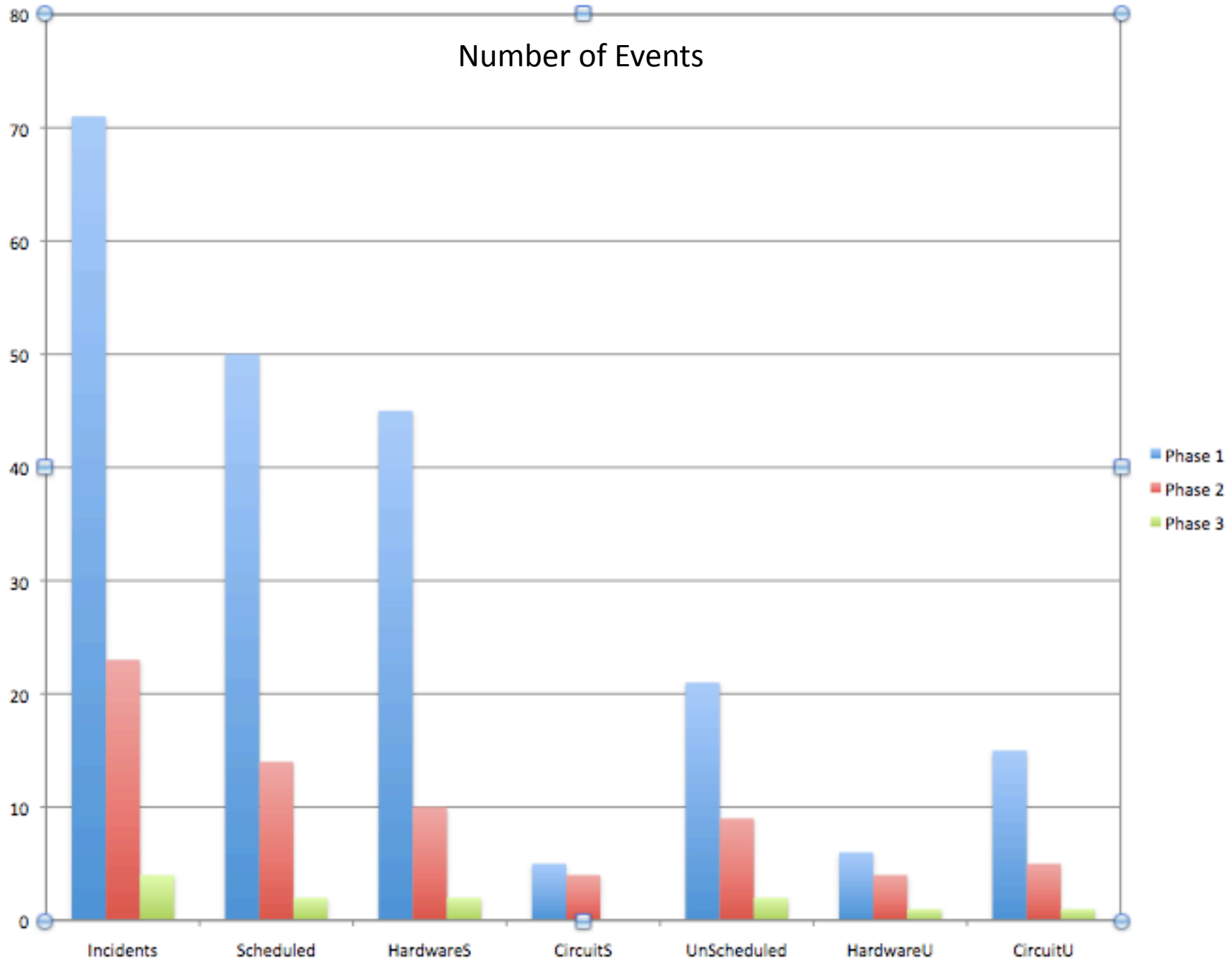
### Downtime Comparison (minutes)



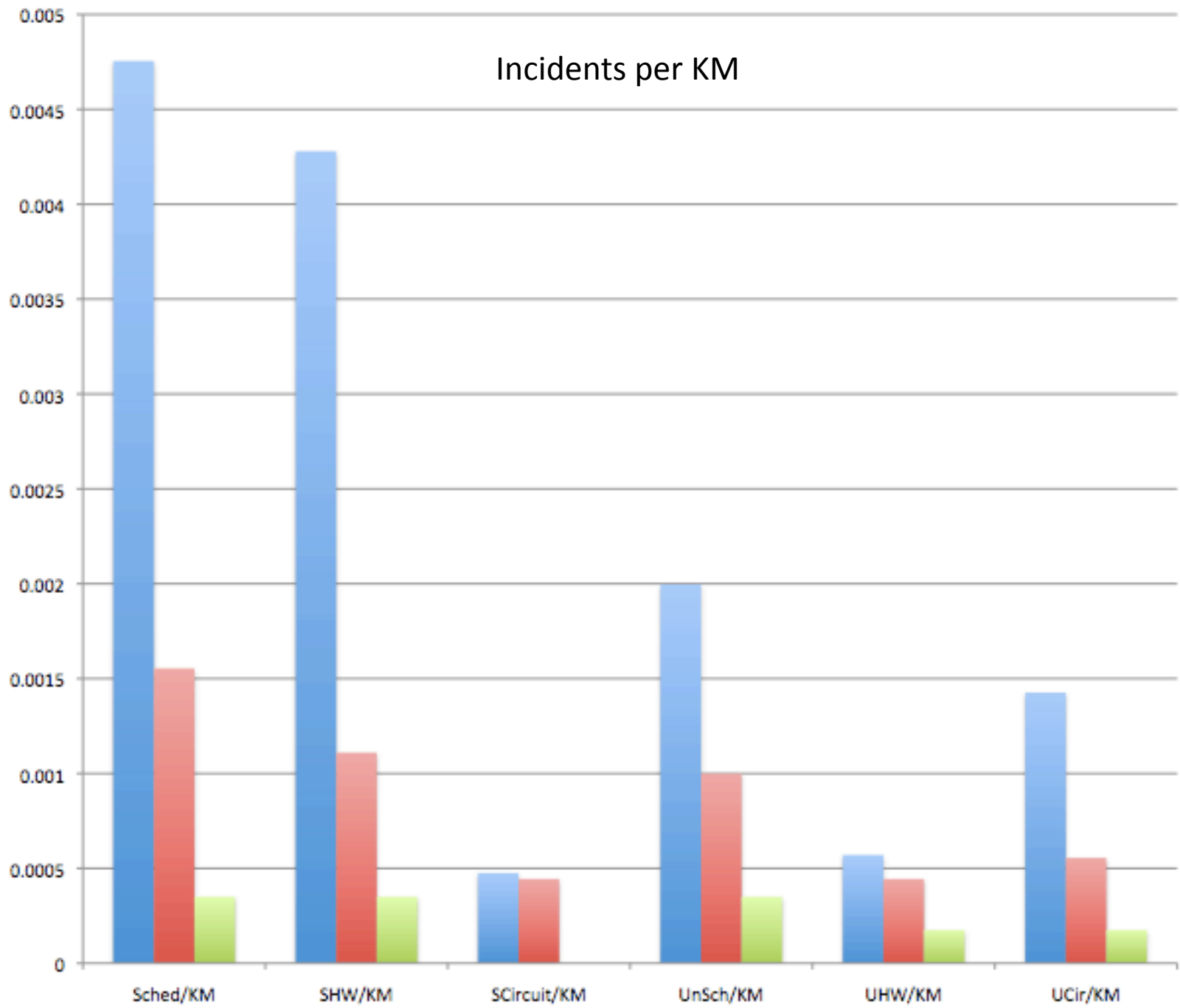
# Minutes per Kilometer



Number of Events



### Incidents per KM



Questions?